

2015 LACCD Student Success Scorecard Appendices

Contents

DEFINITIONS.....	3
DEFINITION OF METRICS.....	3
COHORT SIZE.....	4
COHORT SIZE BY GROUP.....	4
Cohort Size by Group: Overall and Unprepared.....	4
COHORT SIZE BY COLLEGE.....	5
Cohort Size by College: Overall and Unprepared.....	5
COMPLETION RATE.....	6
COMPLETION RATE BY GROUP.....	6
Completion Rate: Overall Students.....	6
Completion Rate: Prepared Students.....	7
Completion Rate: Unprepared Students.....	8
COMPLETION RATE BY COLLEGE.....	9
Completion Rate by College: Overall Students.....	9
Completion Rate by College: Prepared Students.....	10
Completion Rate by College: Unprepared Students.....	11
AT LEAST 30 UNITS COMPLETION RATE.....	12
AT LEAST 30 UNITS COMPLETION RATE BY GROUP.....	12
At Least 30 Units Completion Rate: Overall Students.....	12
At Least 30 Units Completion Rate: Prepared Students.....	13
At Least 30 Units Completion Rate: Unprepared Students.....	14
AT LEAST 30 UNITS COMPLETION RATE BY COLLEGE.....	15
At Least 30 Units Completion Rate by College: Overall Students.....	15
At Least 30 Units Completion Rate by College: Prepared Students.....	16
At Least 30 Units Completion Rate by College: Unprepared Students.....	17
PERSISTENCE RATE.....	18
PERSISTENCE RATE BY GROUP.....	18
Persistence Rate: Overall Students.....	18
Persistence Rate: Prepared Students.....	19

Persistence Rate: Unprepared Students.....	20
PERSISTENCE RATE BY COLLEGE	21
Persistence Rate by College: Overall Students	21
Persistence Rate by College: Prepared Students.....	22
Persistence Rate by College: Unprepared Students	23
REMEDIAL PROGRESS RATE (IN ENGLISH, ESL, AND MATH).....	24
REMEDIAL PROGRESS RATE BY GROUP	24
Remedial Progress Rate: English.....	24
Remedial Progress Rate: English as a Second Language.....	25
Remedial Progress Rate: Math	26
REMEDIAL PROGRESS RATE BY COLLEGE.....	27
Remedial Progress Rate by College: English	27
Remedial Progress Rate by College: English as a Second Language	28
Remedial Progress Rate by College: Math.....	29
CAREER TECHNICAL EDUCATION COMPLETION RATE	30
Career Technical Education Completion Rate by Group.....	30
Career Technical Education Completion Rate by College.....	31
CAREER DEVELOPMENT AND COLLEGE PREPARATION COMPLETION RATE	32
Career Development and College Preparation Completion Rate by Group	32
Career Development and College Preparation Completion Rate by College	33
SUMMARY OF PROGRESS	34
ALL METRICS BY GROUP.....	34
All Metrics by Group: Current cohort	34
All Metrics by Group: Change from previous year.....	35
ALL METRICS BY COLLEGE.....	36
All Metrics by College: Current cohort.....	36
All Metrics by College: Change from previous year	37

DEFINITIONS

DEFINITION OF METRICS

COMPLETION RATE (STUDENT PROGRESS AND ATTAINMENT RATE)

Percentage of first-time students with minimum of 6 units earned who attempted any Math or English in the first 3 years and achieved any of the following outcomes within 6 years of entry:

- Earned AA/AS or credit Certificate (Chancellor's Office approved)
- Transfer to 4-year institution (students shown to have enrolled at any 4-year institution of higher education after enrolling at a CCC)
- Achieved "Transfer Prepared" (student successfully completed 60 UC/CSU transferable units with a GPA \geq 2.0)

30 UNITS RATE

Percentage of first-time students with minimum of 6 units earned who attempted any Math or English in the first 3 years and achieved the following measure of progress (or milestone) within 6 years of entry:

- Earned at least 30 units in the CCC system

PERSISTENCE RATE

Percentage of first-time students with minimum of 6 units earned who attempted any Math or English in the first 3 years and achieved the following measure of progress (or momentum point):

- Enroll in first 3 consecutive primary semester terms anywhere in the CCC system

REMEDIAL PROGRESS RATE (MATH, ENGLISH, ESL)

Percentage of credit students who attempted for the first time a course designated at "levels below transfer" in:

- Math and successfully completed a college-level course in Math within 6 years
- English and successfully completed a college-level course in English within 6 years
- ESL and successfully completed a college-level ESL course or a college-level English course within 6 years

CAREER TECHNICAL COMPLETION RATE (CTE)

Percentage of students who attempted a CTE course for the first-time and completed more than 8 units in the subsequent 3 years in a single discipline (2-digit vocational TOP code where at least 1 of the courses is occupational SAM A, B or C) and who achieved any of the following outcomes within 6 years of entry:

- Earned any AA/AS or credit Certificate (Chancellor's Office approved)
- Transfer to 4-year institution (students shown to have enrolled at any 4-year institution of higher education after enrolling at a CCC)
- Achieved "Transfer Prepared" (student successfully completed 60 UC/CSU transferable units with a GPA \geq 2.0)

CAREER DEVELOPMENT & COLLEGE PREPARATION (CDCP) COMPLETION RATE

Percentage of students who attempt 2 or more CDCP courses, with a minimum of 4 attendance hours in each of those courses, within 3 years. The following outcomes within 6 years of entry:

- CDCP Certificate(s)
- Earned AA/AS or Certificates (Chancellor's Office Approved)
- Transfer to 4-year institution (students shown to have enrolled at any 4-year institution of higher education after enrolling at a CCC)
- Achieved "Transfer Prepared" (student successfully completed 60 UC/CSU transferable units with a GPA \geq 2.0)

COHORT SIZE

COHORT SIZE BY GROUP

Cohort Size by Group: Overall and Unprepared

Overall Cohort	2004-05	2005-06	2006-07	2007-08	2008-09
LACCD	11,927	13,743	13,512	13,982	14,792
Surrounding Districts	26,249	27,491	29,753	32,550	35,459
Multi-College Urban	14,943	14,915	16,434	18,026	19,012
Statewide	161,650	169,531	179,423	194,377	209,719

Unprepared Cohort	2004-05	2005-06	2006-07	2007-08	2008-09
LACCD	10,269	11,728	11,381	11,958	12,719
Surrounding Districts	19,061	19,652	21,164	23,759	26,168
Multi-College Urban	10,188	10,569	11,779	13,070	14,064
Statewide	118,784	124,656	131,741	144,763	157,388

COHORT SIZE BY COLLEGE

Cohort Size by College: Overall and Unprepared

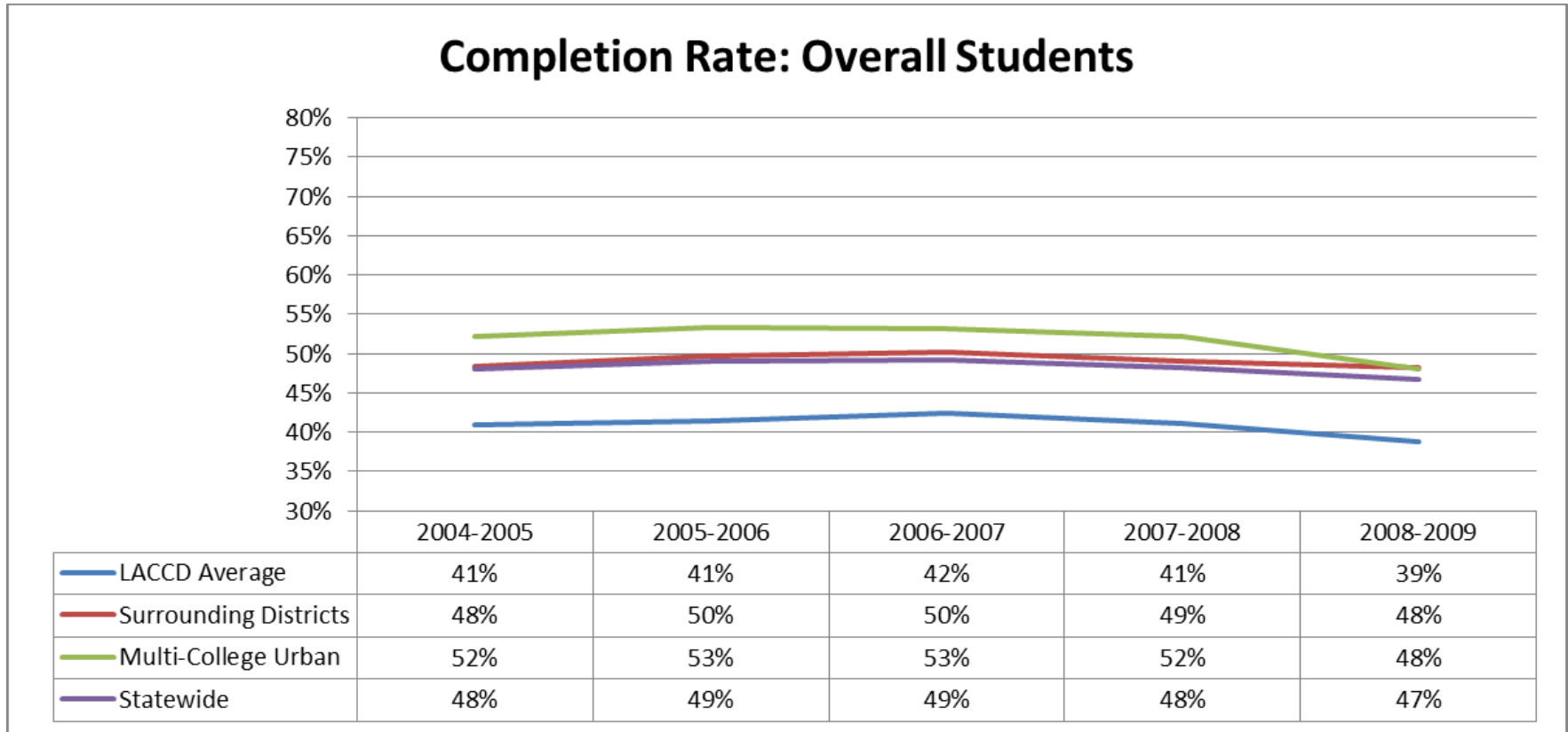
Overall Cohort	2004-05	2005-06	2006-07	2007-08	2008-09
City	1,709	1,742	1,602	1,604	1,612
East	2,154	2,560	2,425	2,515	2,421
Harbor	893	1,055	1,114	1,268	1,412
Mission	746	958	897	917	970
Pierce	2,090	2,549	2,762	2,788	3,075
Southwest	680	780	847	808	970
Trade-Tech	1,243	1,239	1,056	1,158	1,321
Valley	1,795	2,173	2,133	2,127	2,164
West	617	687	676	797	847

Unprepared Cohort	2004-05	2005-06	2006-07	2007-08	2008-09
City	1,504	1,500	1,391	1,422	1,462
East	1,918	2,266	2,125	2,209	2,184
Harbor	707	836	866	1,035	1,152
Mission	648	857	803	841	882
Pierce	1,677	2,027	2,162	2,273	2,467
Southwest	645	734	764	754	910
Trade-Tech	1,208	1,194	995	1,054	1,237
Valley	1,425	1,740	1,711	1,704	1,703
West	537	574	564	666	722

COMPLETION RATE

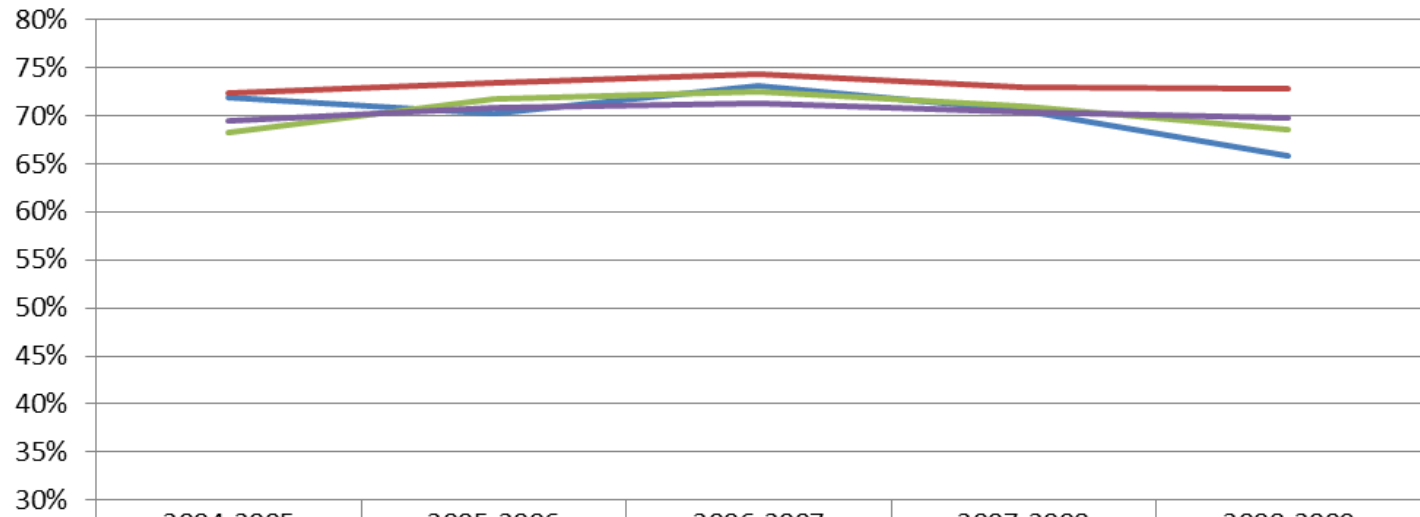
COMPLETION RATE BY GROUP

Completion Rate: Overall Students



Completion Rate: Prepared Students

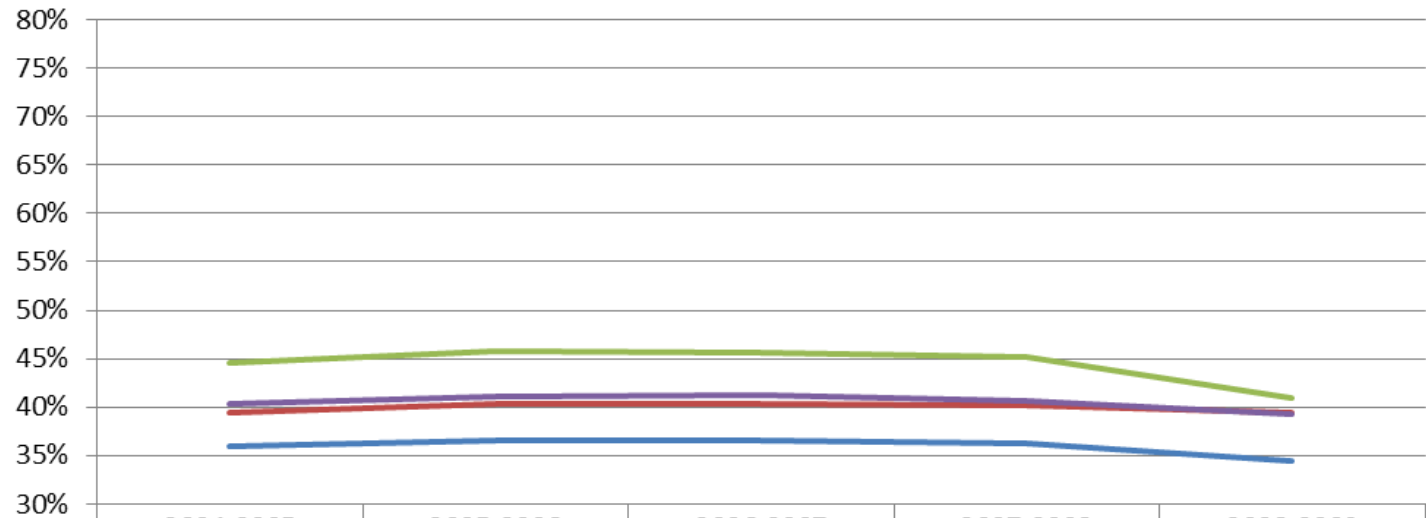
Completion Rate: Prepared Students



	2004-2005	2005-2006	2006-2007	2007-2008	2008-2009
— LACCD Average	72%	70%	73%	71%	66%
— Surrounding Districts	72%	73%	74%	73%	73%
— Multi-College Urban	68%	72%	72%	71%	69%
— Statewide	69%	71%	71%	70%	70%

Completion Rate: Unprepared Students

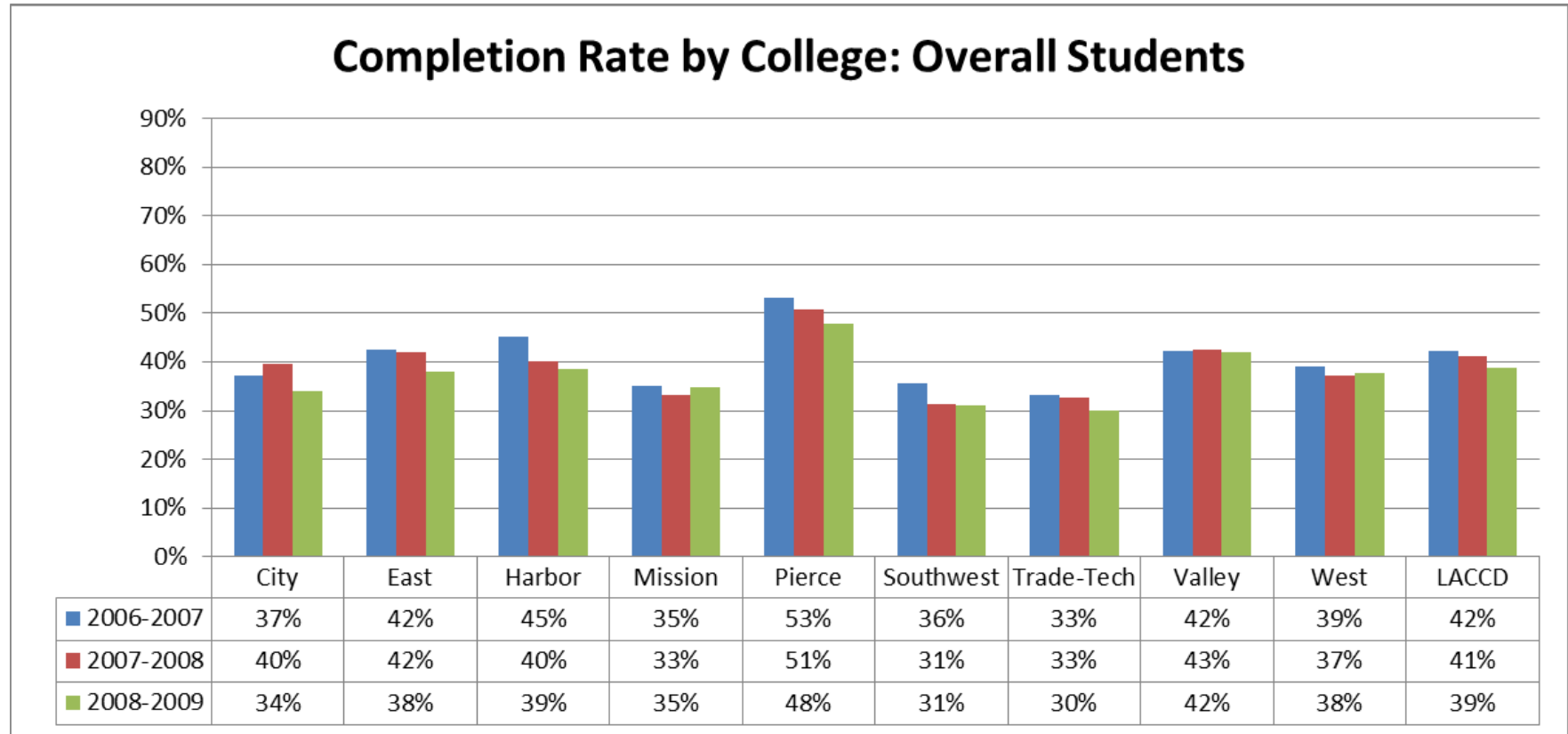
Completion Rate: Unprepared Students



	2004-2005	2005-2006	2006-2007	2007-2008	2008-2009
LACCD Average	36%	37%	37%	36%	34%
Surrounding Districts	39%	40%	40%	40%	39%
Multi-College Urban	45%	46%	46%	45%	41%
Statewide	40%	41%	41%	41%	39%

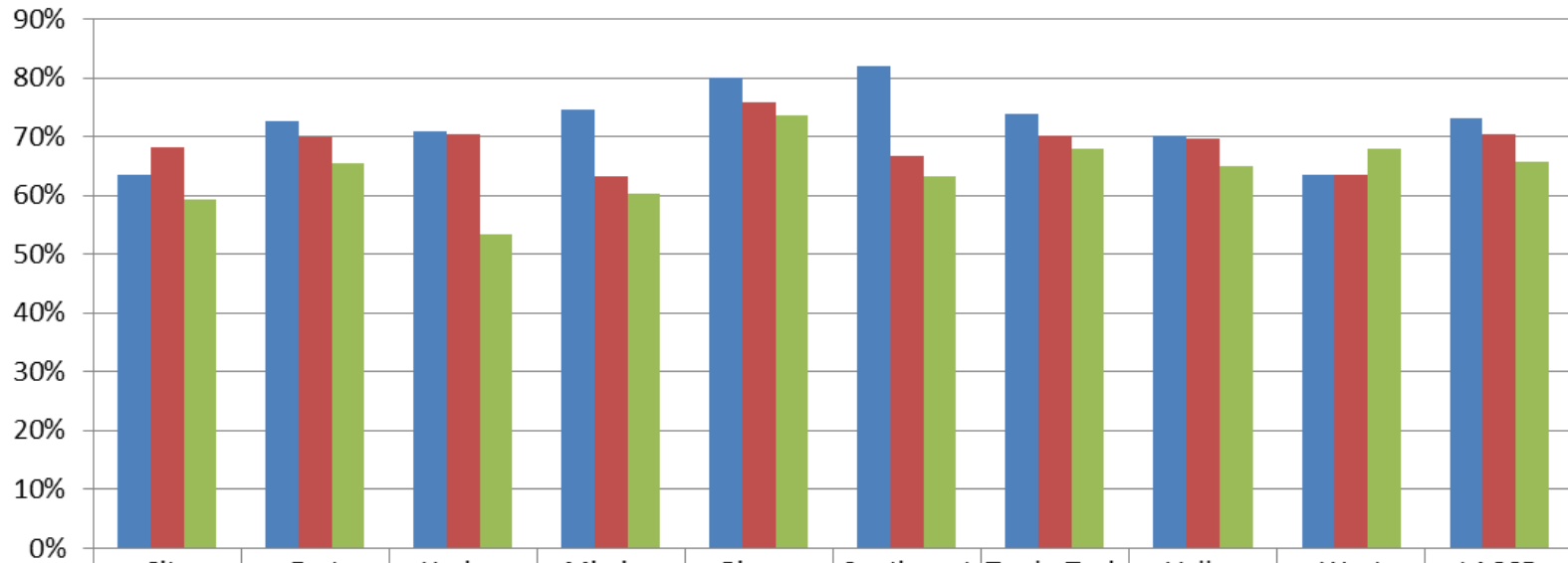
COMPLETION RATE BY COLLEGE

Completion Rate by College: Overall Students



Completion Rate by College: Prepared Students

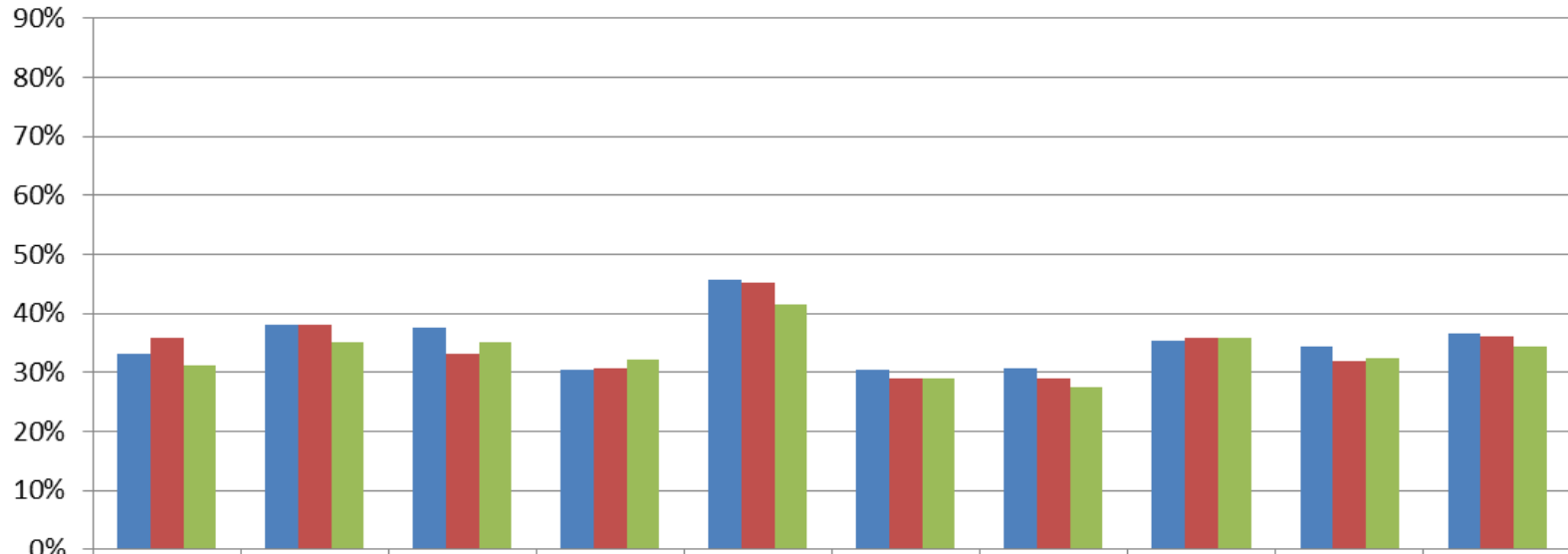
Completion Rate by College: Prepared Students



	City	East	Harbor	Mission	Pierce	Southwest	Trade-Tech	Valley	West	LACCD
■ 2006-2007	64%	73%	71%	75%	80%	82%	74%	70%	63%	73%
■ 2007-2008	68%	70%	70%	63%	76%	67%	70%	70%	63%	71%
■ 2008-2009	59%	65%	54%	60%	74%	63%	68%	65%	68%	66%

Completion Rate by College: Unprepared Students

Completion Rate by College: Unprepared Students

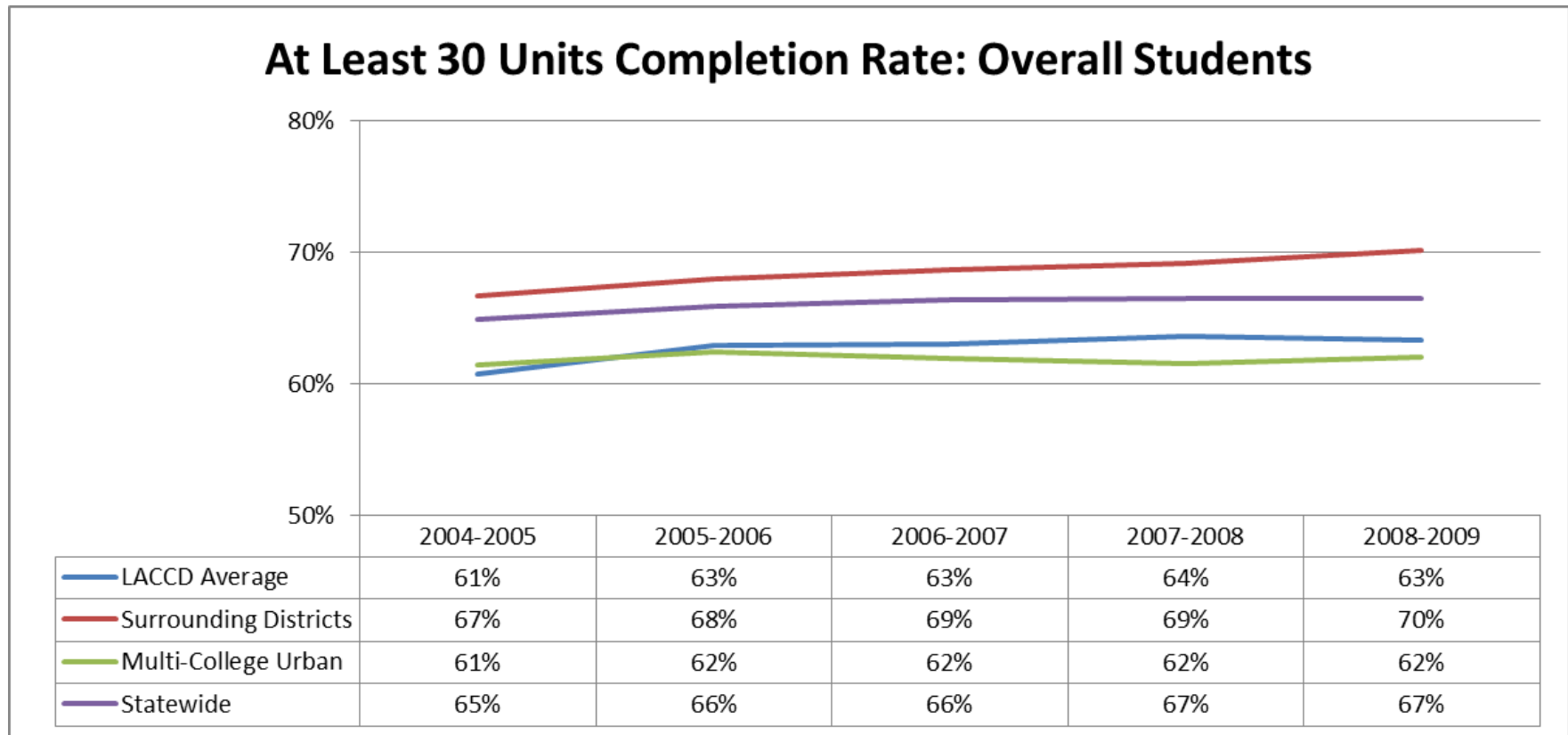


	City	East	Harbor	Mission	Pierce	Southwest	Trade-Tech	Valley	West	LACCD
■ 2006-2007	33%	38%	38%	30%	46%	31%	31%	35%	34%	37%
■ 2007-2008	36%	38%	33%	31%	45%	29%	29%	36%	32%	36%
■ 2008-2009	31%	35%	35%	32%	42%	29%	27%	36%	33%	34%

AT LEAST 30 UNITS COMPLETION RATE

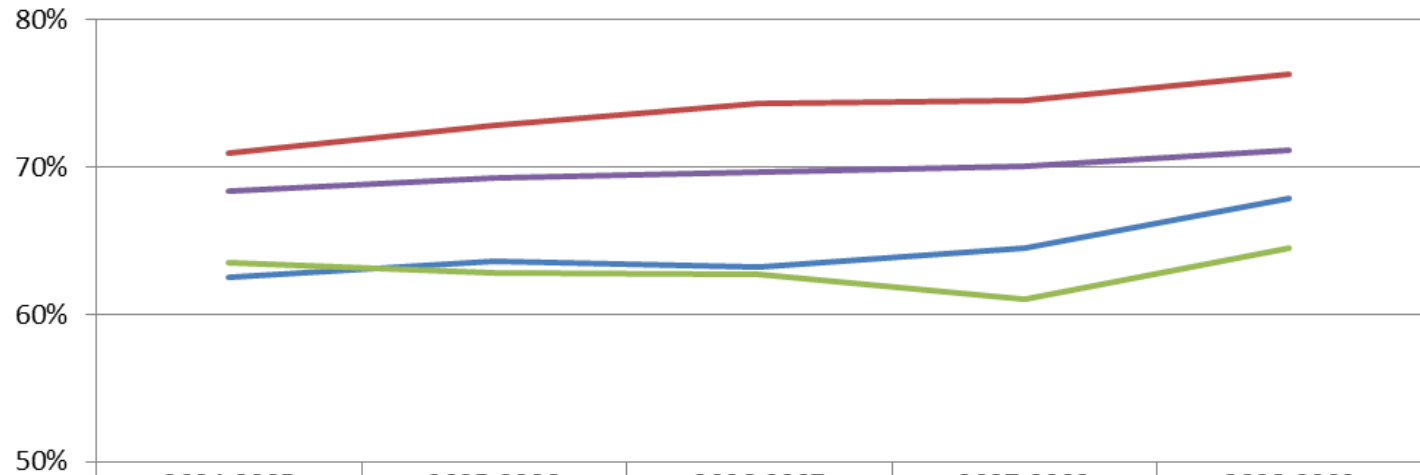
AT LEAST 30 UNITS COMPLETION RATE BY GROUP

At Least 30 Units Completion Rate: Overall Students



At Least 30 Units Completion Rate: Prepared Students

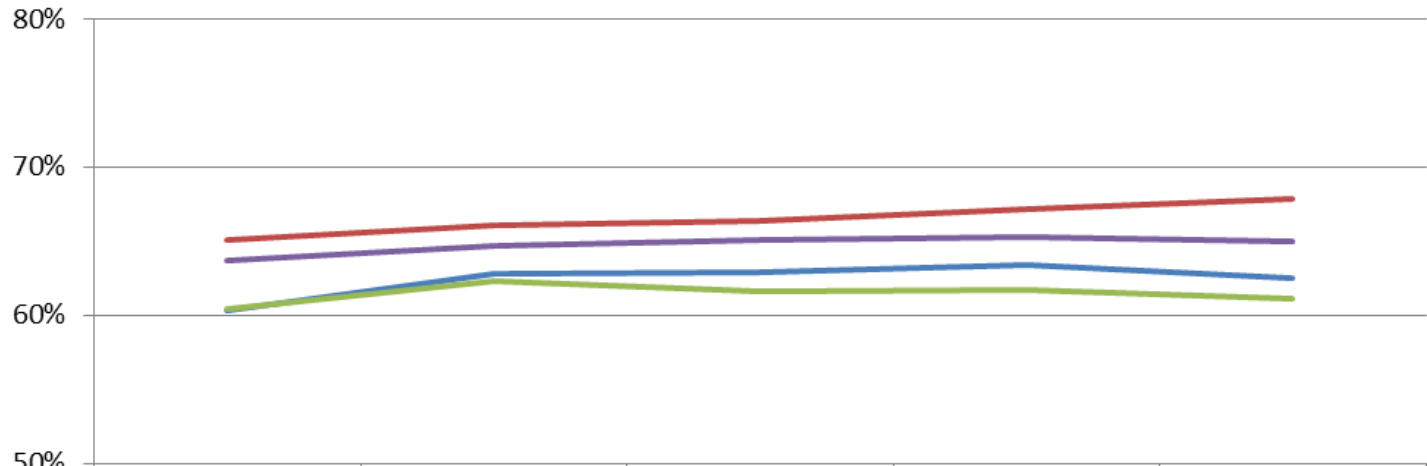
At Least 30 Units Completion Rate: Prepared Students



	2004-2005	2005-2006	2006-2007	2007-2008	2008-2009
LACCD Average	62%	64%	63%	65%	68%
Surrounding Districts	71%	73%	74%	75%	76%
Multi-College Urban	64%	63%	63%	61%	65%
Statewide	68%	69%	70%	70%	71%

At Least 30 Units Completion Rate: Unprepared Students

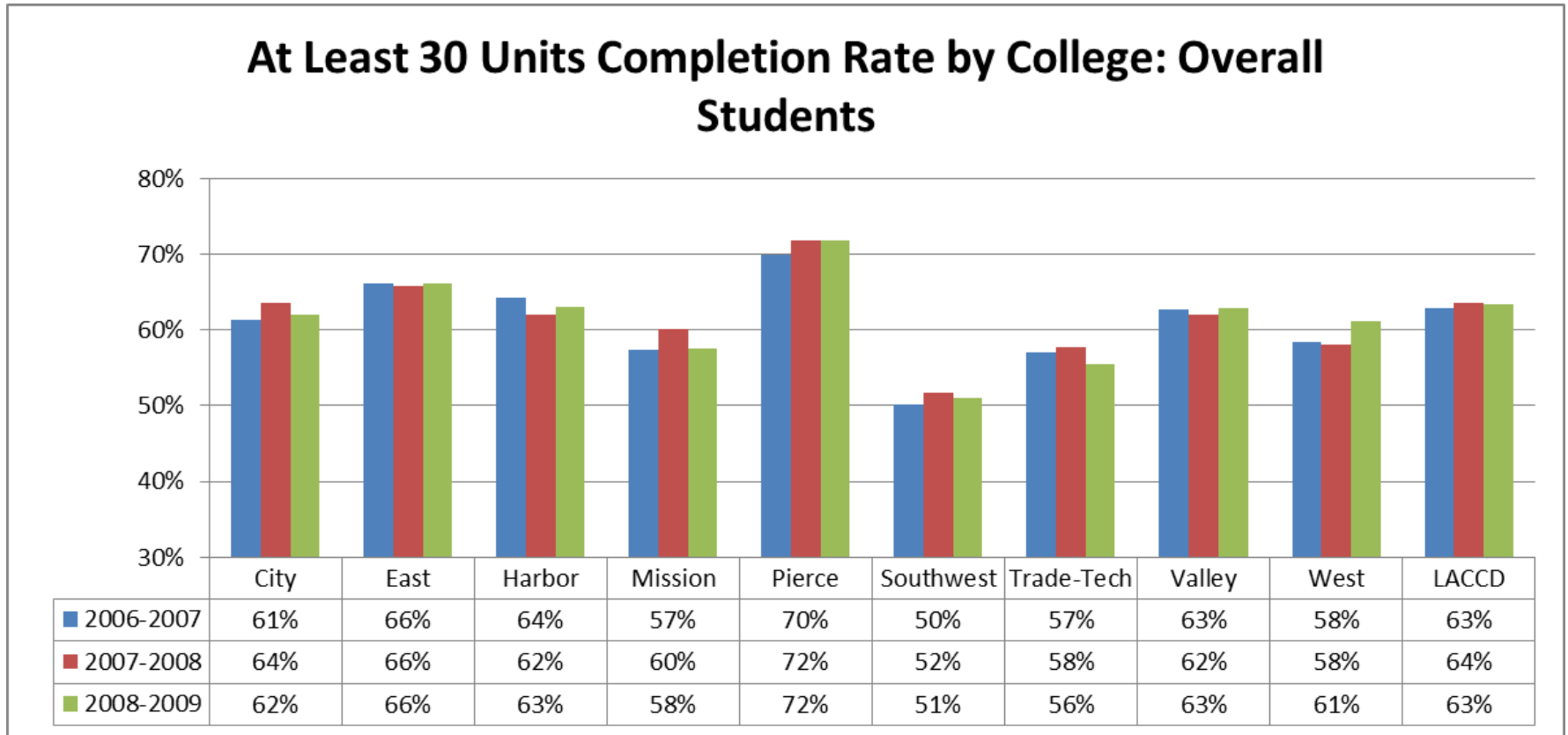
At Least 30 Units Completion Rate: Unprepared Students



	2004-2005	2005-2006	2006-2007	2007-2008	2008-2009
LACCD Average	60%	63%	63%	63%	63%
Surrounding Districts	65%	66%	66%	67%	68%
Multi-College Urban	60%	62%	62%	62%	61%
Statewide	64%	65%	65%	65%	65%

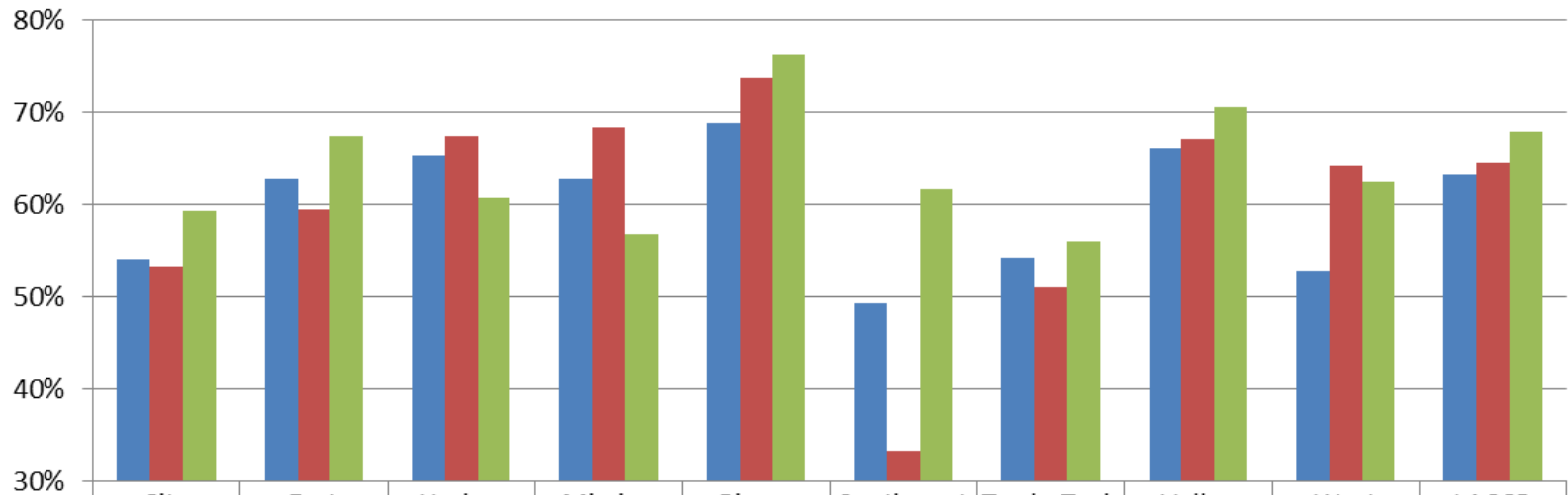
AT LEAST 30 UNITS COMPLETION RATE BY COLLEGE

At Least 30 Units Completion Rate by College: Overall Students



At Least 30 Units Completion Rate by College: Prepared Students

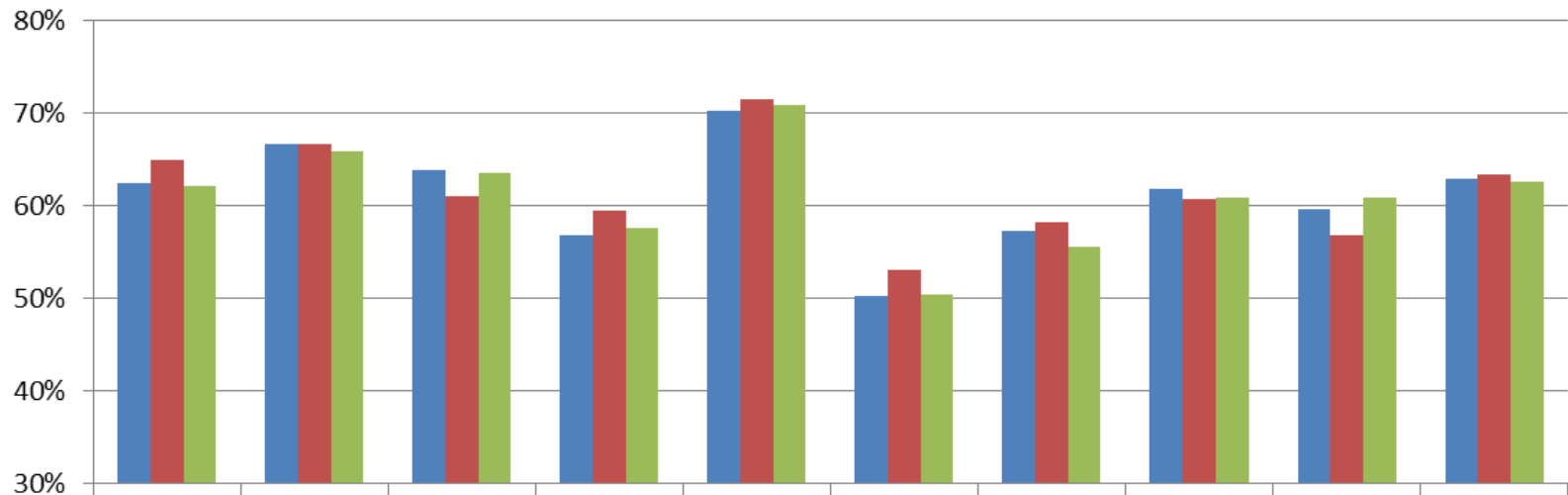
At Least 30 Units Completion Rate by College: Prepared Students



	City	East	Harbor	Mission	Pierce	Southwest	Trade-Tech	Valley	West	LACCD
■ 2006-2007	54%	63%	65%	63%	69%	49%	54%	66%	53%	63%
■ 2007-2008	53%	60%	67%	68%	74%	33%	51%	67%	64%	65%
■ 2008-2009	59%	68%	61%	57%	76%	62%	56%	71%	62%	68%

At Least 30 Units Completion Rate by College: Unprepared Students

At Least 30 Units Completion Rate by College: Unprepared Students

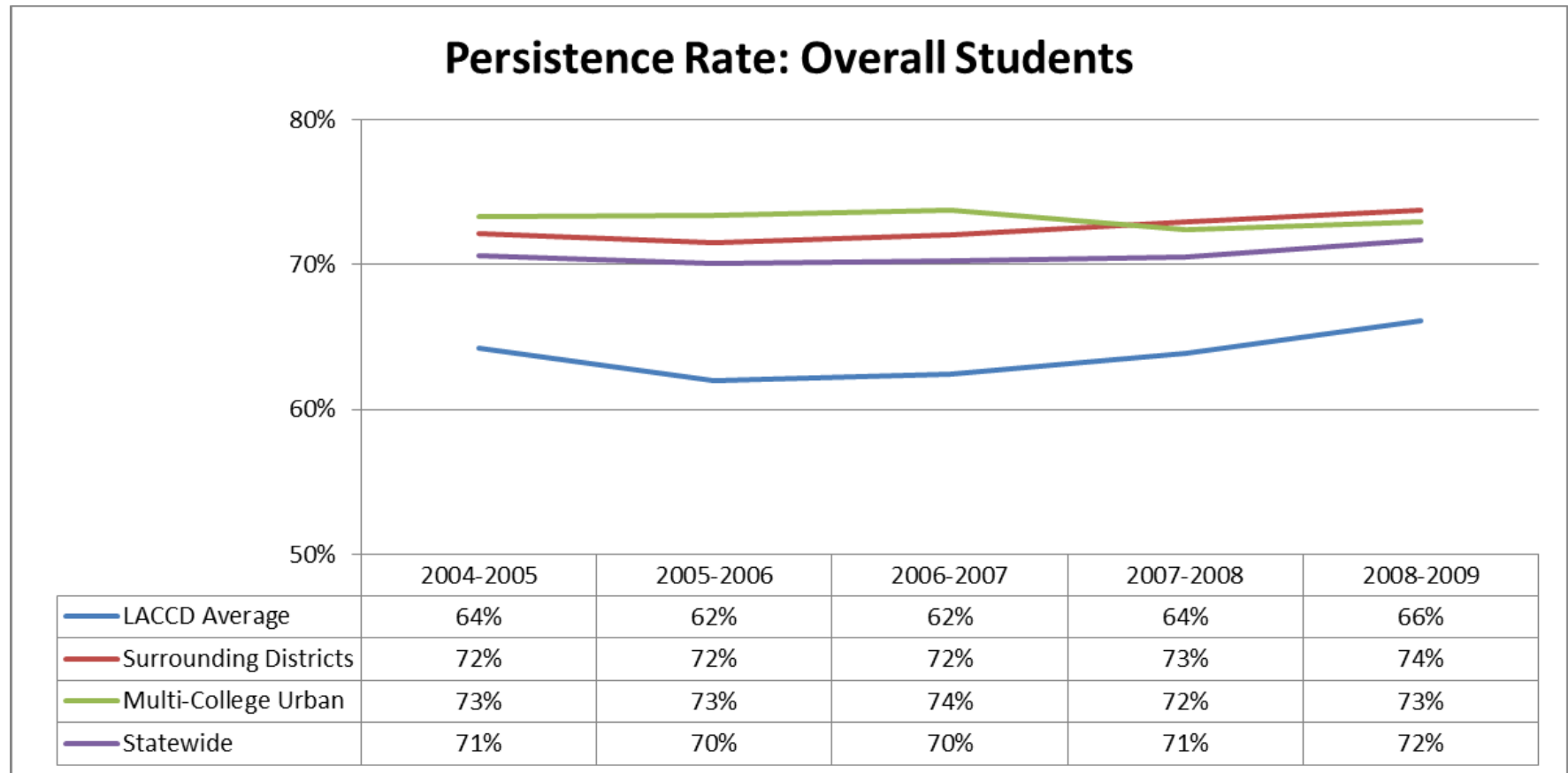


	City	East	Harbor	Mission	Pierce	Southwest	Trade-Tech	Valley	West	LACCD
■ 2006-2007	63%	67%	64%	57%	70%	50%	57%	62%	60%	63%
■ 2007-2008	65%	67%	61%	60%	72%	53%	58%	61%	57%	63%
■ 2008-2009	62%	66%	64%	58%	71%	50%	56%	61%	61%	63%

PERSISTENCE RATE

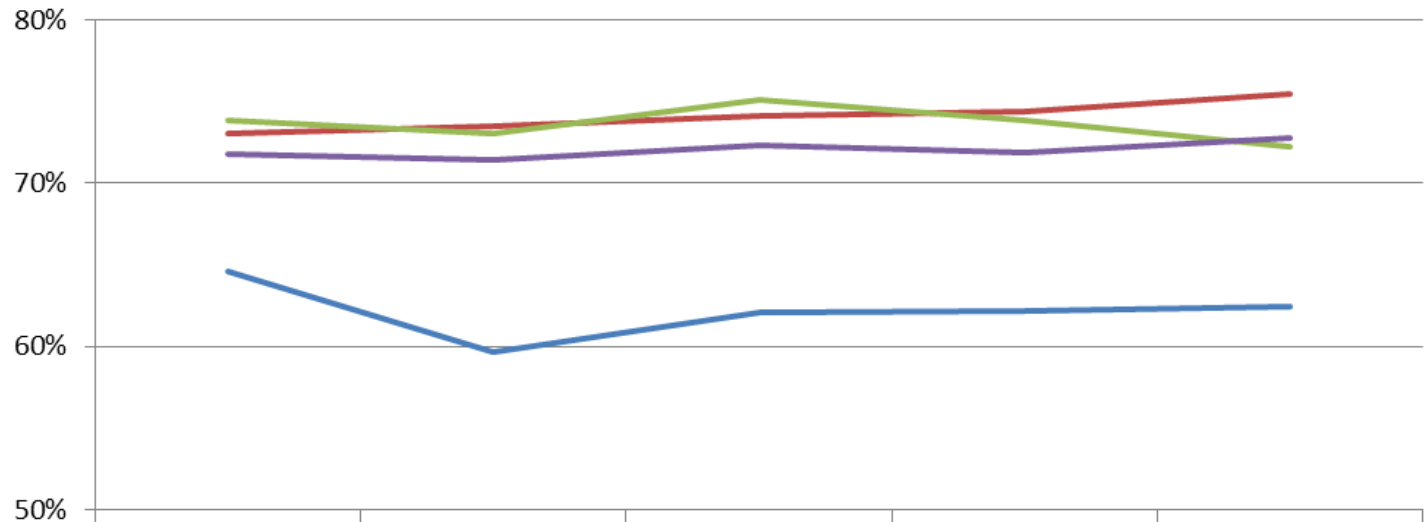
PERSISTENCE RATE BY GROUP

Persistence Rate: Overall Students



Persistence Rate: Prepared Students

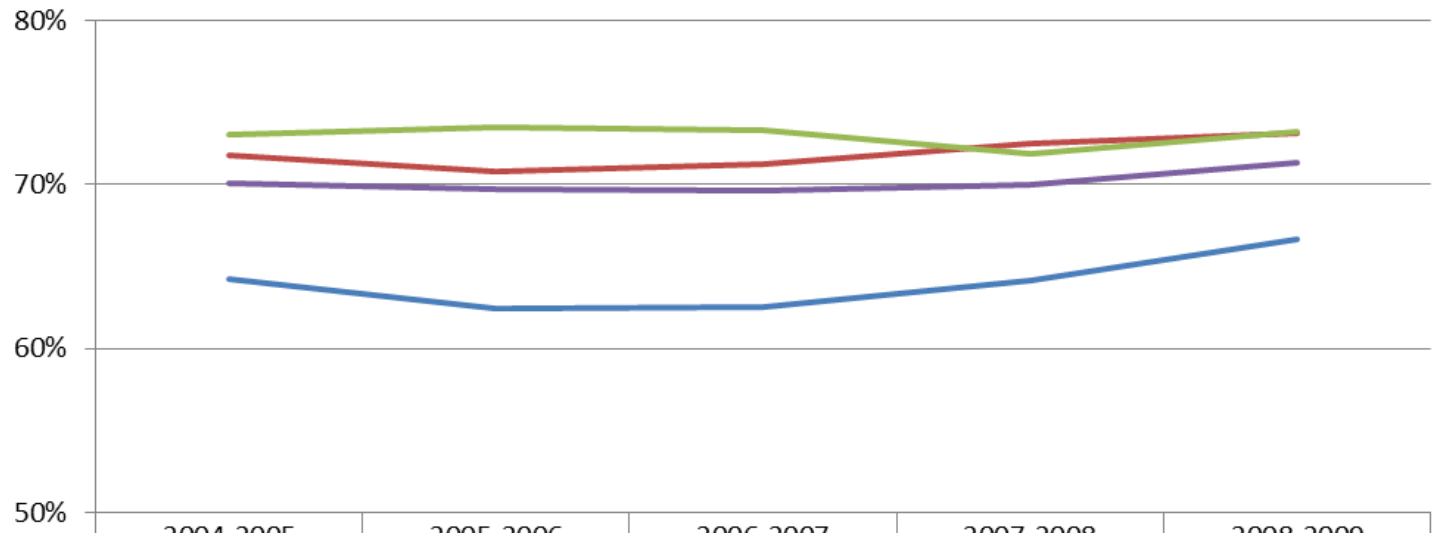
Persistence Rate: Prepared Students



	2004-2005	2005-2006	2006-2007	2007-2008	2008-2009
— LACCD Average	65%	60%	62%	62%	62%
— Surrounding Districts	73%	73%	74%	74%	76%
— Multi-College Urban	74%	73%	75%	74%	72%
— Statewide	72%	71%	72%	72%	73%

Persistence Rate: Unprepared Students

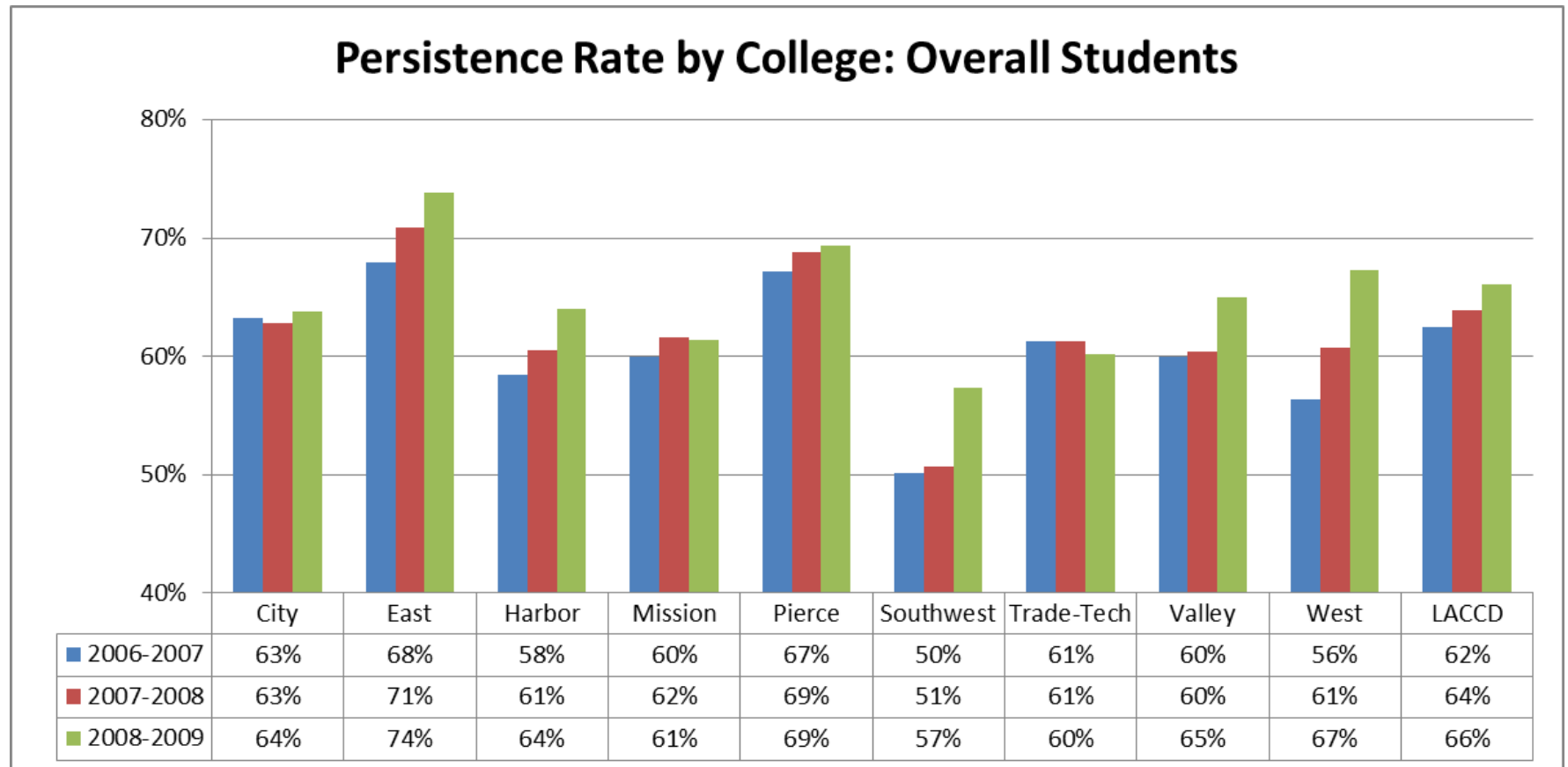
Persistence Rate: Unprepared Students



	2004-2005	2005-2006	2006-2007	2007-2008	2008-2009
— LACCD Average	64%	62%	63%	64%	67%
— Surrounding Districts	72%	71%	71%	72%	73%
— Multi-College Urban	73%	74%	73%	72%	73%
— Statewide	70%	70%	70%	70%	71%

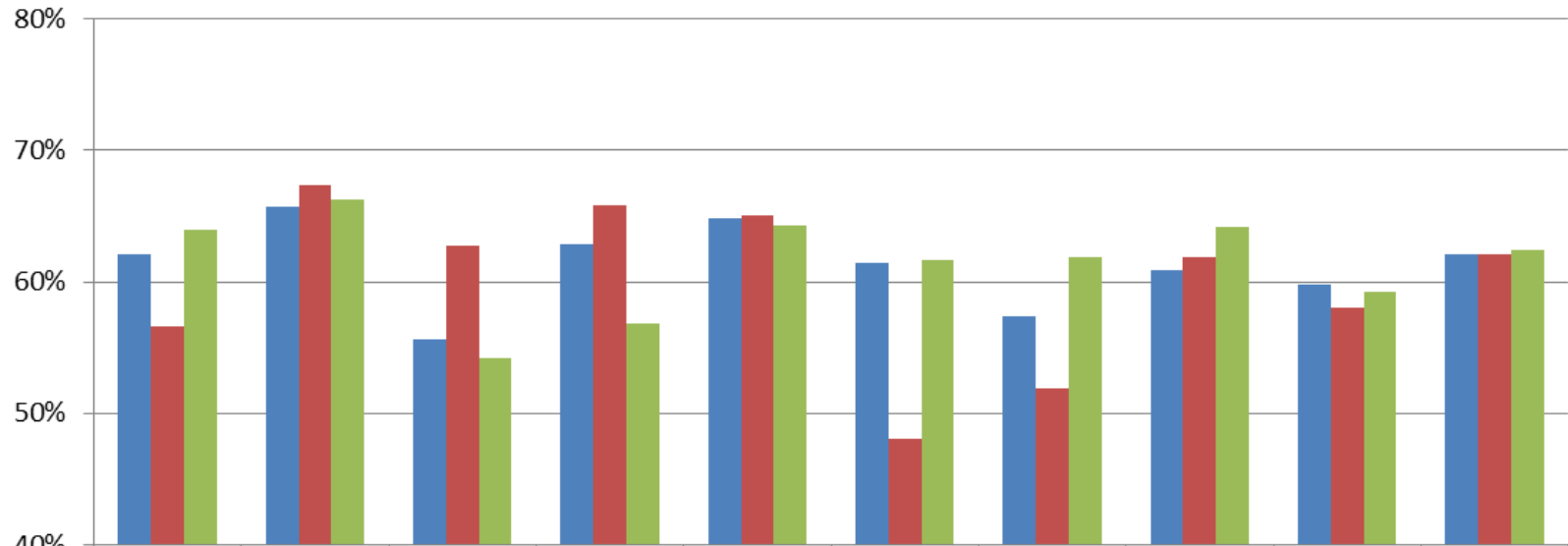
PERSISTENCE RATE BY COLLEGE

Persistence Rate by College: Overall Students



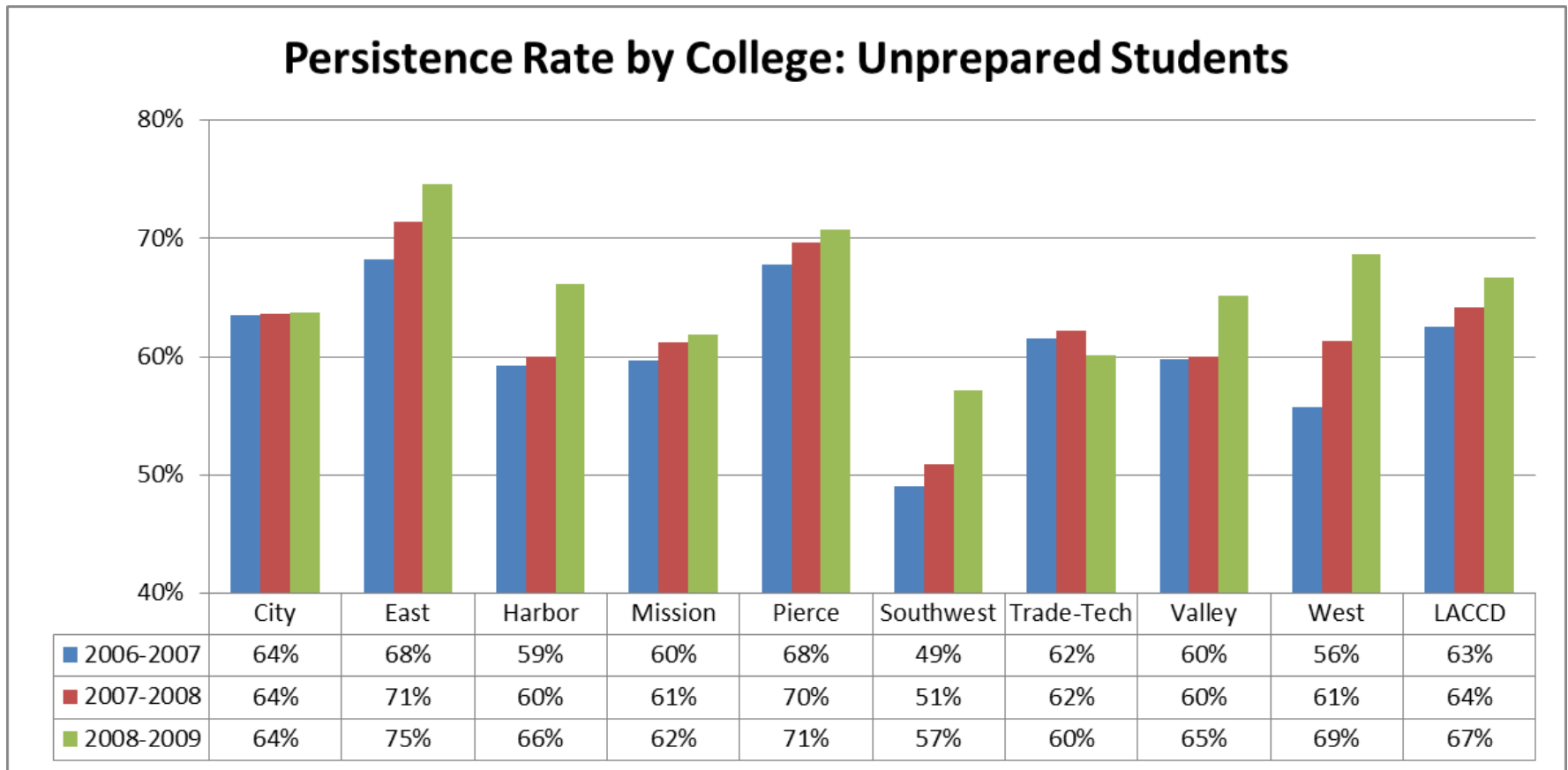
Persistence Rate by College: Prepared Students

Persistence Rate by College: Prepared Students



	City	East	Harbor	Mission	Pierce	Southwest	Trade-Tech	Valley	West	LACCD
■ 2006-2007	62%	66%	56%	63%	65%	61%	57%	61%	60%	62%
■ 2007-2008	57%	67%	63%	66%	65%	48%	52%	62%	58%	62%
■ 2008-2009	64%	66%	54%	57%	64%	62%	62%	64%	59%	62%

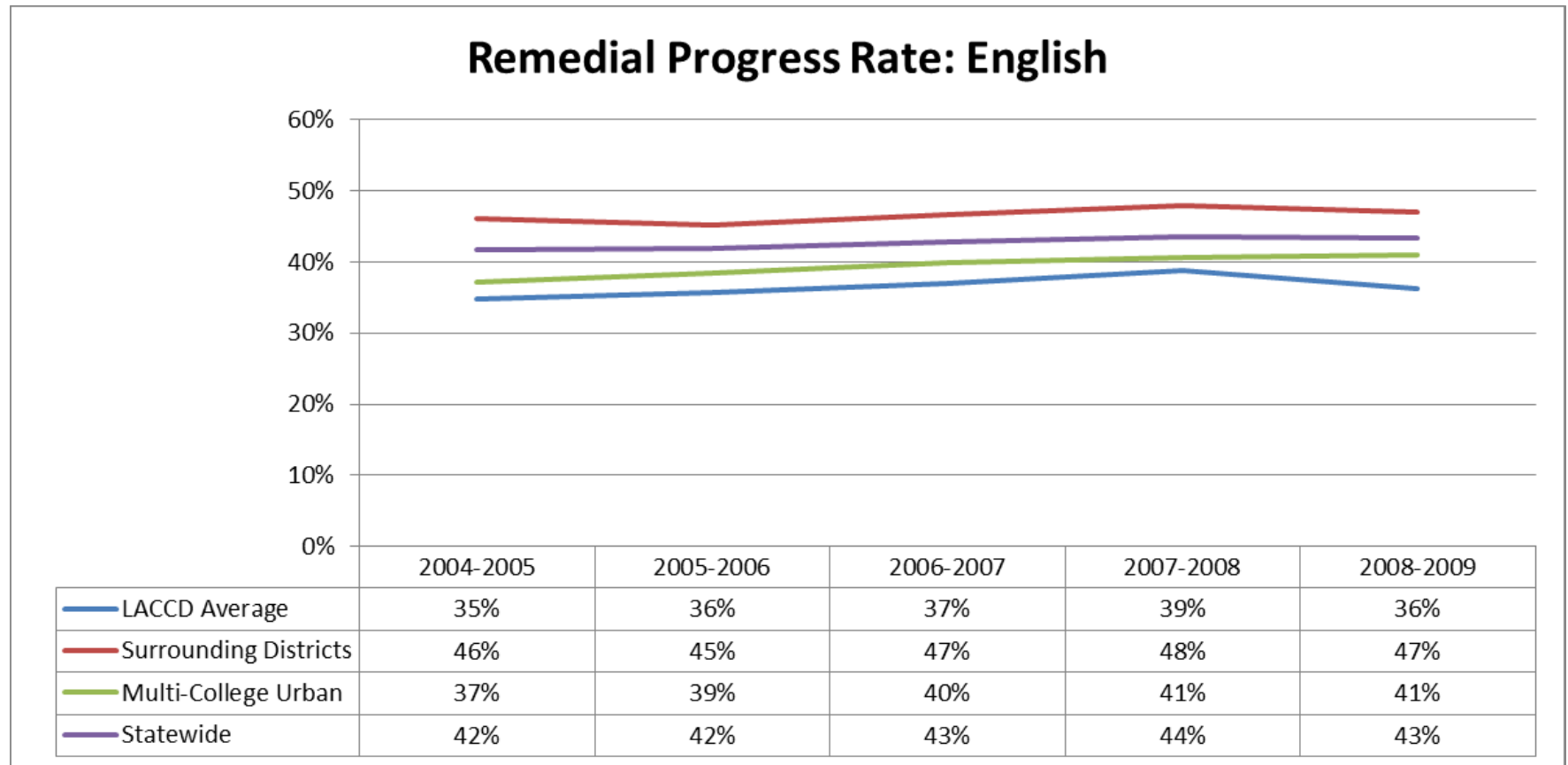
Persistence Rate by College: Unprepared Students



REMEDIAL PROGRESS RATE (IN ENGLISH, ESL, AND MATH)

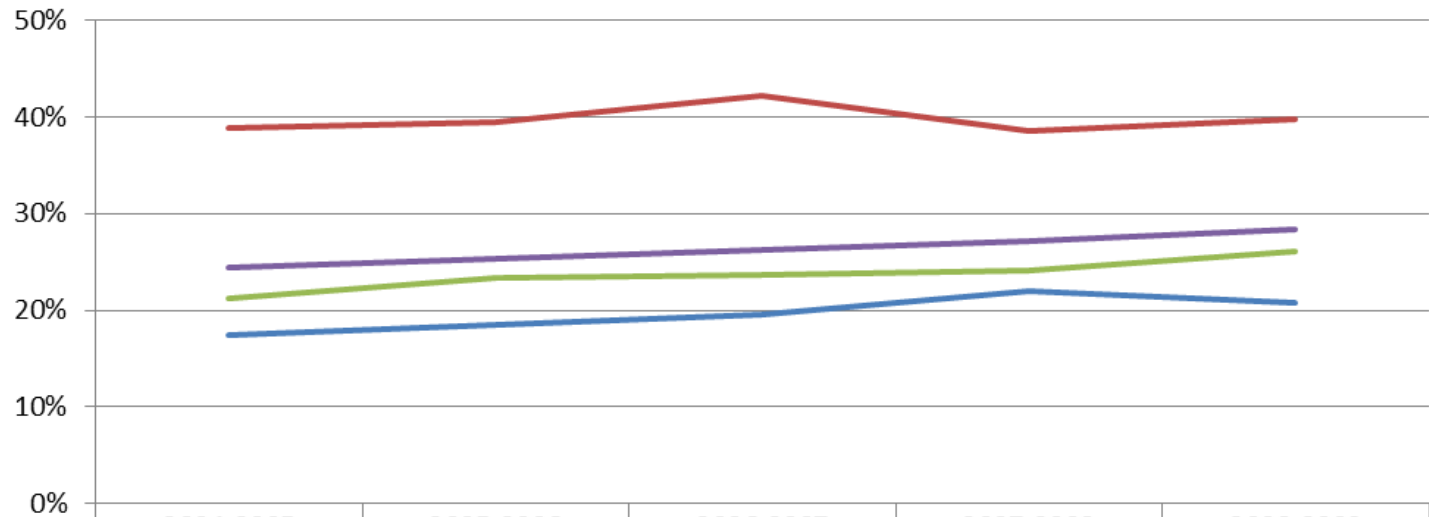
REMEDIAL PROGRESS RATE BY GROUP

Remedial Progress Rate: English



Remedial Progress Rate: English as a Second Language

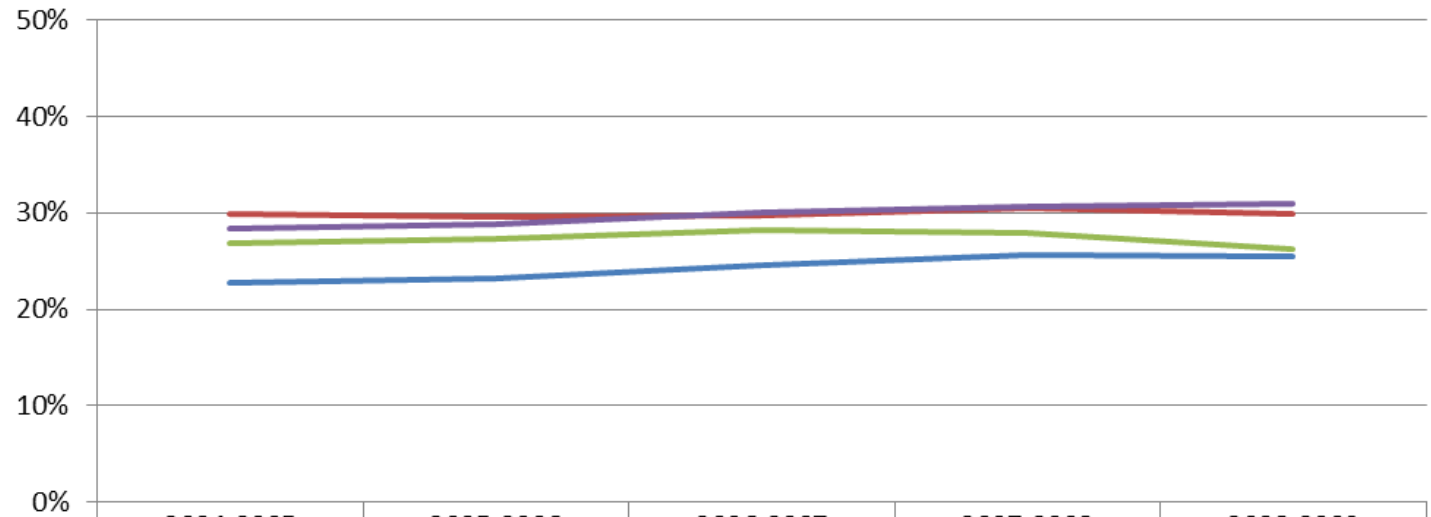
Remedial Progress Rate: ESL



	2004-2005	2005-2006	2006-2007	2007-2008	2008-2009
LACCD Average	17%	18%	20%	22%	21%
Surrounding Districts	39%	39%	42%	39%	40%
Multi-College Urban	21%	23%	24%	24%	26%
Statewide	24%	25%	26%	27%	28%

Remedial Progress Rate: Math

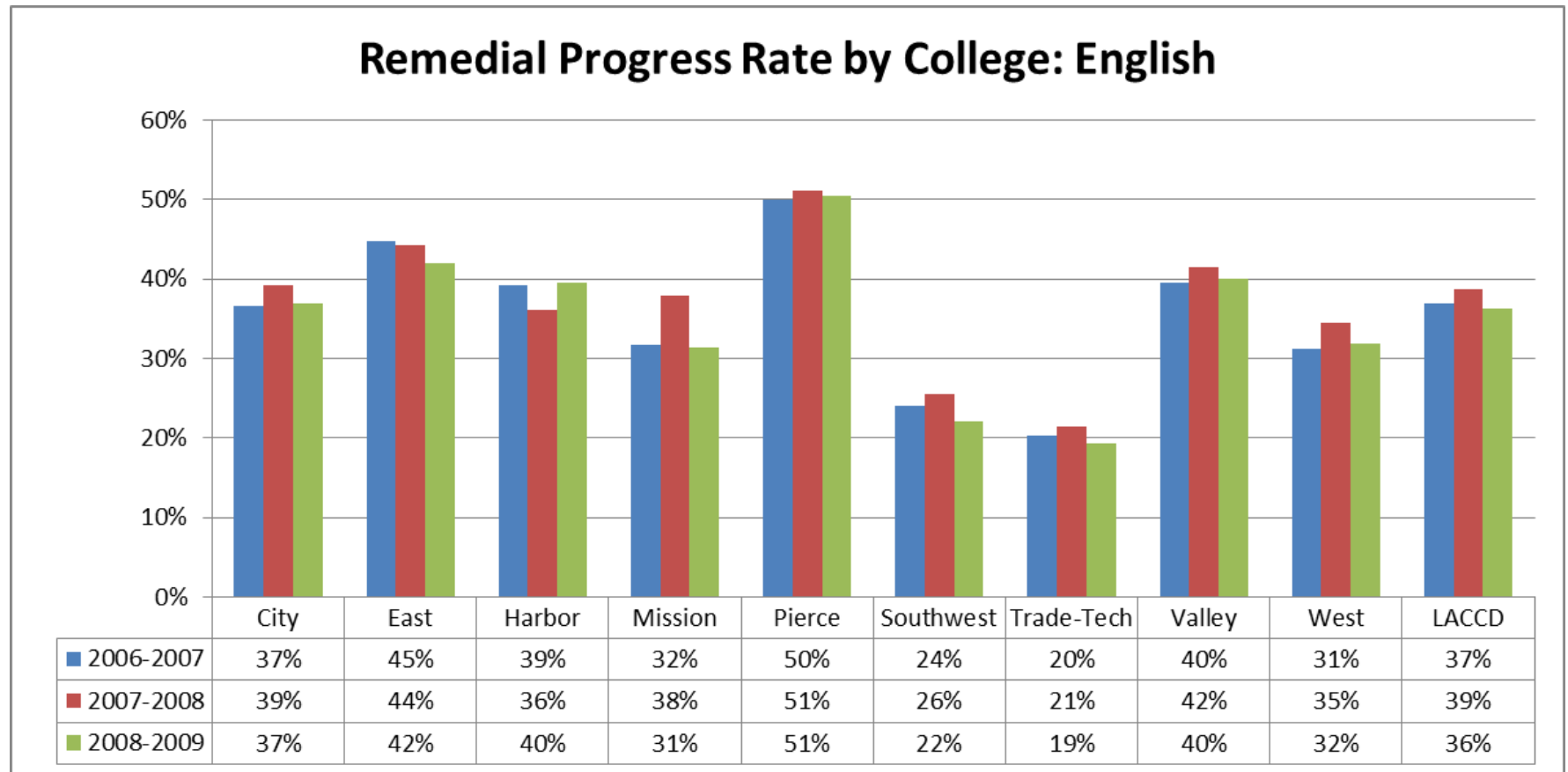
Remedial Progress Rate: Math



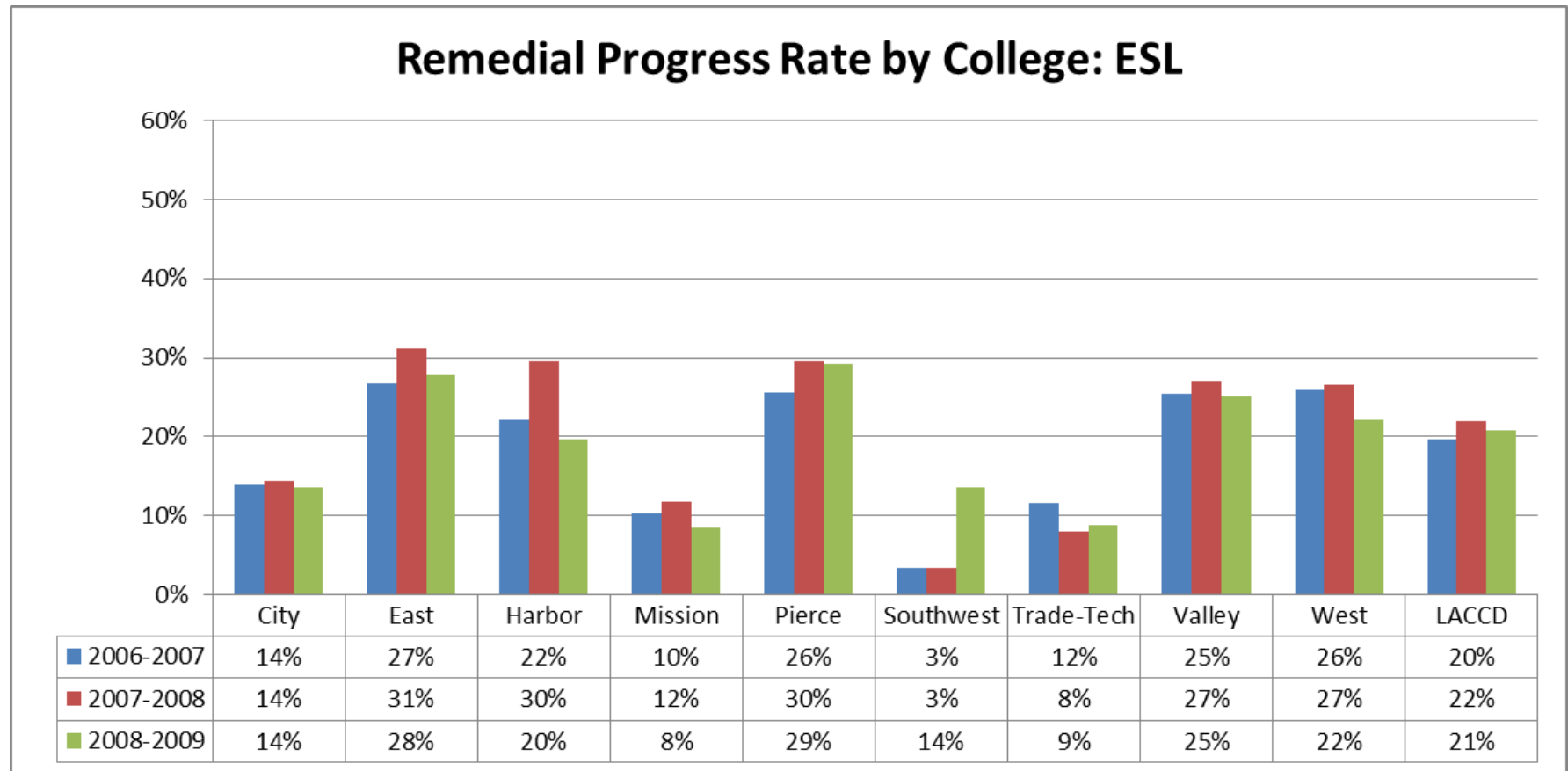
	2004-2005	2005-2006	2006-2007	2007-2008	2008-2009
LACCD Average	23%	23%	25%	26%	25%
Surrounding Districts	30%	30%	30%	30%	30%
Multi-College Urban	27%	27%	28%	28%	26%
Statewide	28%	29%	30%	31%	31%

REMEDIAL PROGRESS RATE BY COLLEGE

Remedial Progress Rate by College: English

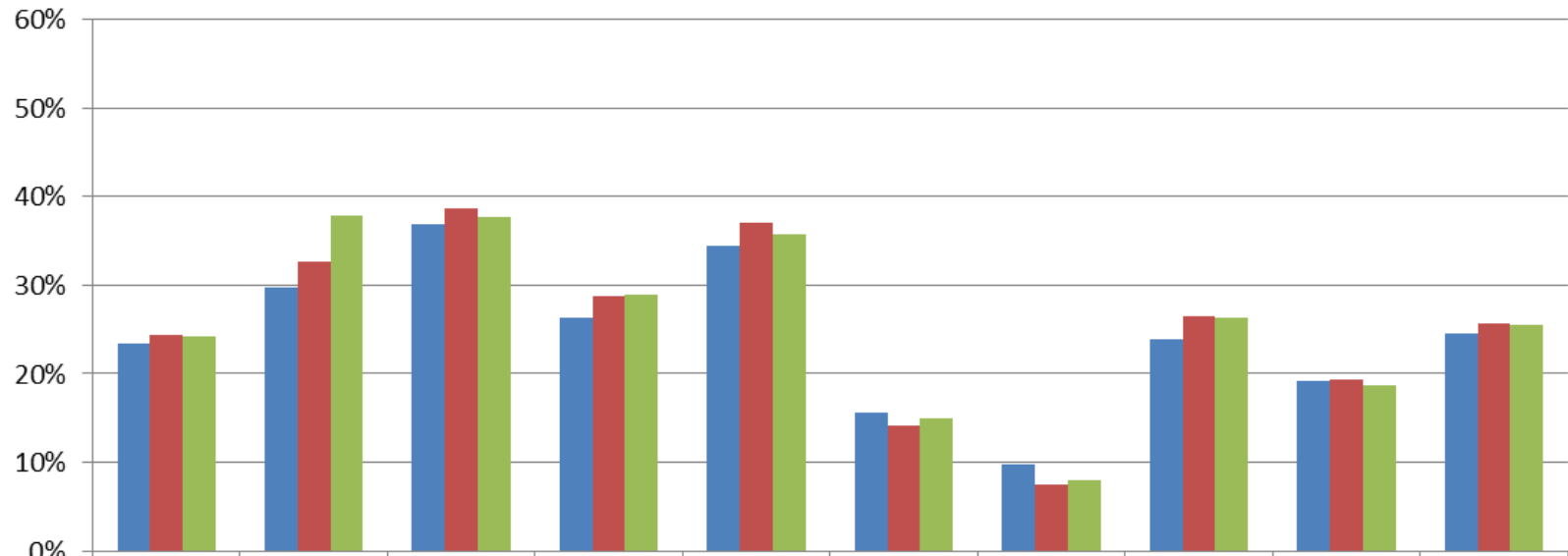


Remedial Progress Rate by College: English as a Second Language



Remedial Progress Rate by College: Math

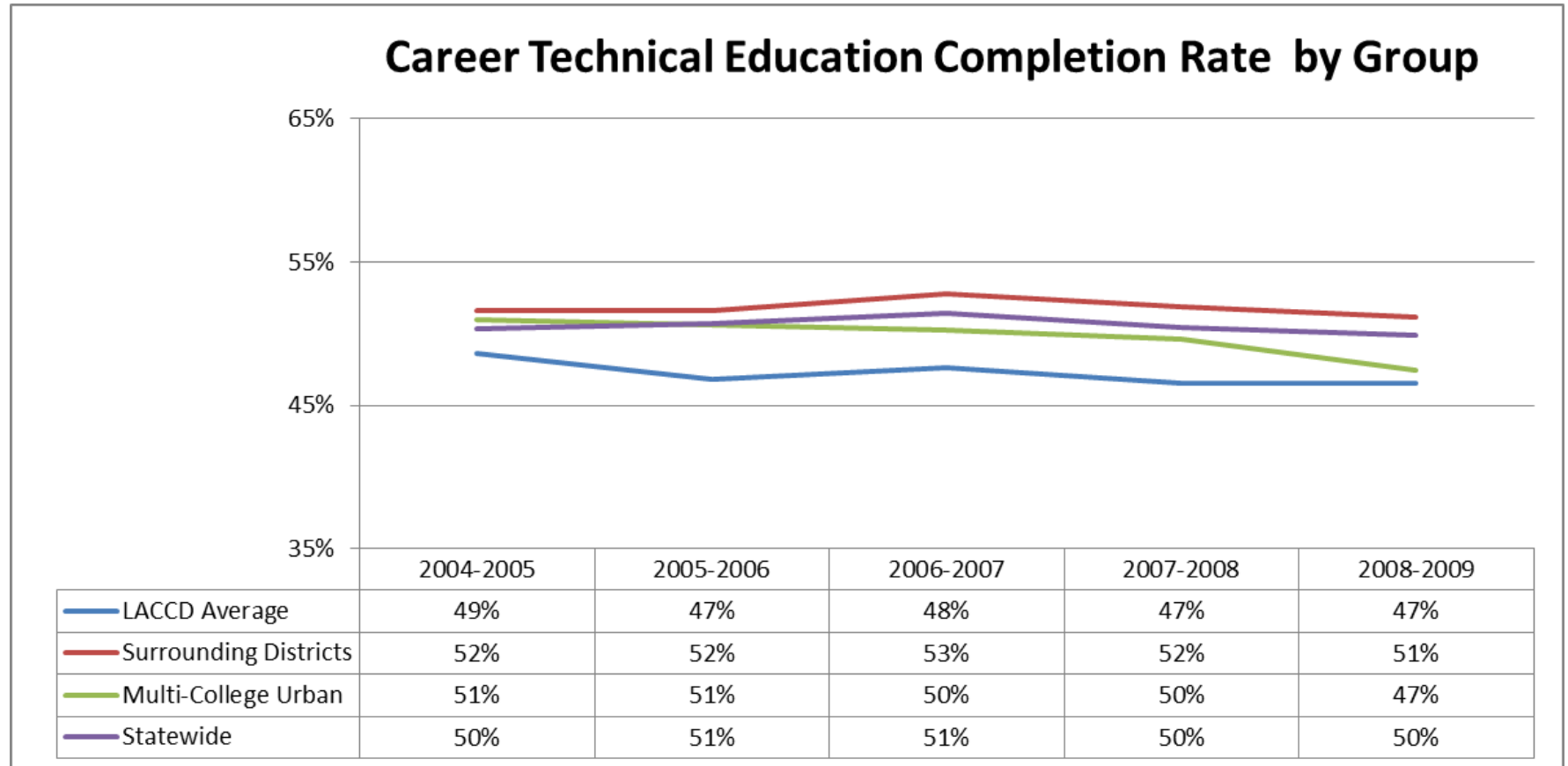
Remedial Progress Rate by College: Math



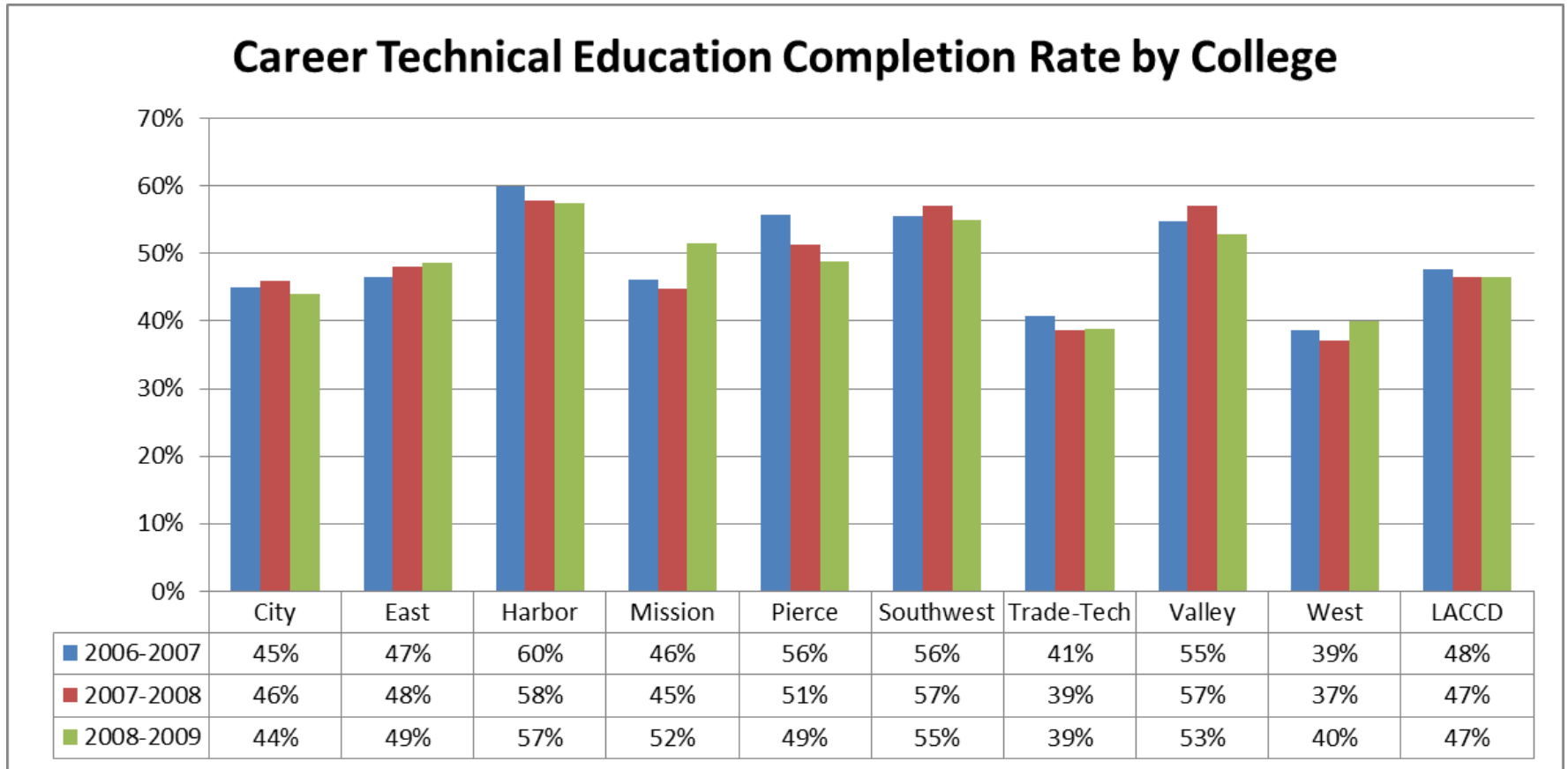
	City	East	Harbor	Mission	Pierce	Southwest	Trade-Tech	Valley	West	LACCD
■ 2006-2007	23%	30%	37%	26%	35%	16%	10%	24%	19%	25%
■ 2007-2008	24%	33%	39%	29%	37%	14%	8%	27%	19%	26%
■ 2008-2009	24%	38%	38%	29%	36%	15%	8%	26%	19%	25%

CAREER TECHNICAL EDUCATION COMPLETION RATE

Career Technical Education Completion Rate by Group

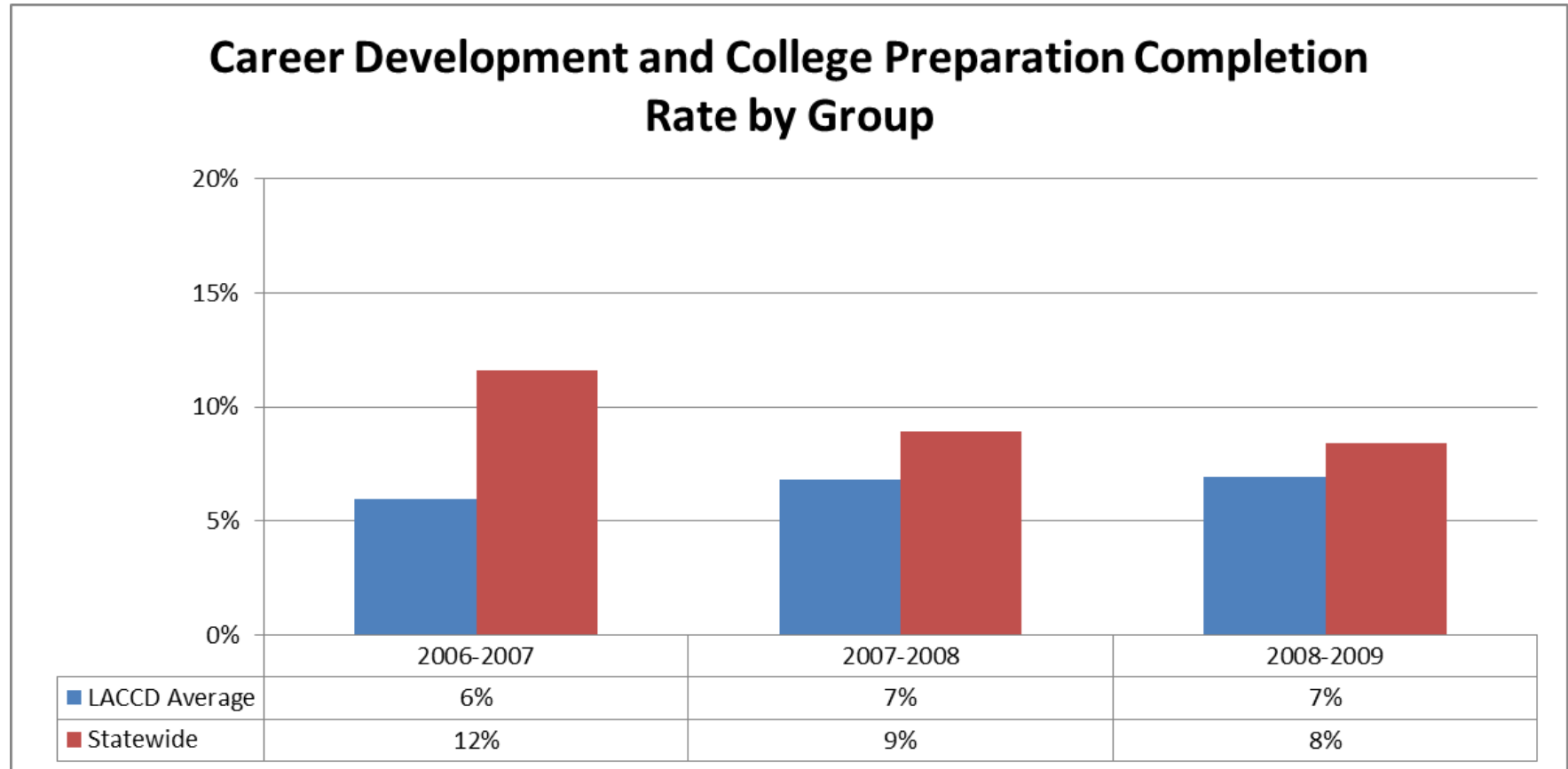


Career Technical Education Completion Rate by College



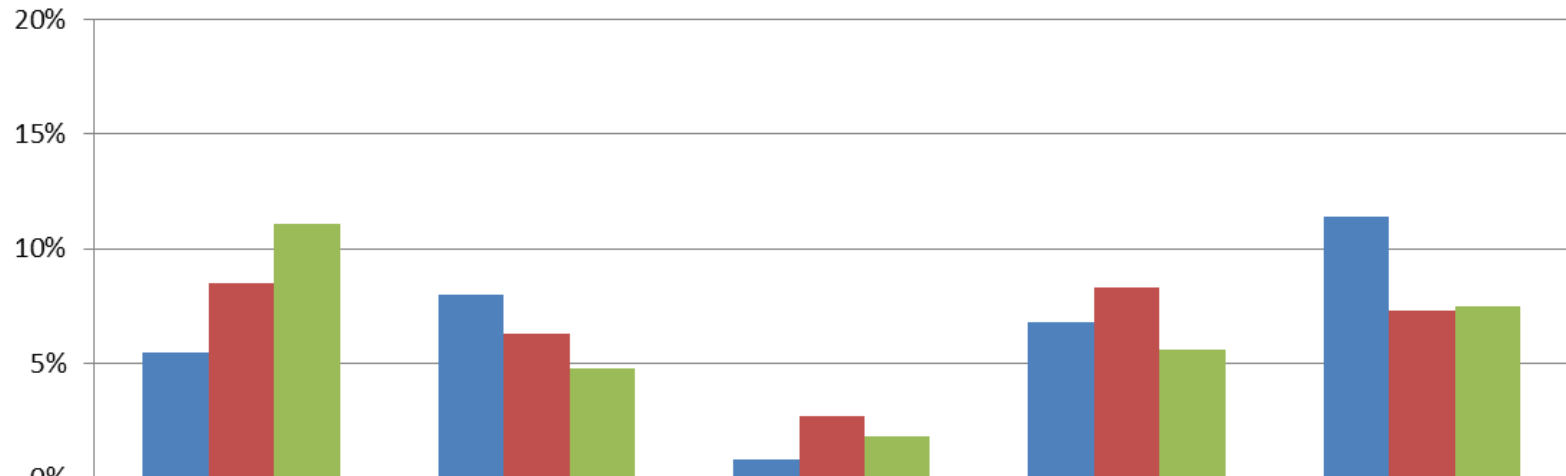
CAREER DEVELOPMENT AND COLLEGE PREPARATION COMPLETION RATE

Career Development and College Preparation Completion Rate by Group



Career Development and College Preparation Completion Rate by College

Career Development and College Preparation Completion Rate by College



	City	East	Southwest	Trade-Tech	Valley
■ 2006-2007	6%	8%	1%	7%	11%
■ 2007-2008	9%	6%	3%	8%	7%
■ 2008-2009	11%	5%	2%	6%	8%

SUMMARY OF PROGRESS

ALL METRICS BY GROUP

All Metrics by Group: Current cohort

Rates	LACCD	Surrounding Districts	Multi-College Urban	Statewide
Completion	39%	48%	48%	47%
At Least 30 Units Completion	63%	70%	62%	67%
Persistence	66%	74%	73%	72%
Remedial Progress: English	36%	47%	41%	43%
Remedial Progress: ESL	21%	40%	26%	28%
Remedial Progress: Math	25%	30%	26%	31%
Career Technical Education Completion	47%	51%	47%	50%
Career Development and College Preparation Completion	7%	n/a	n/a	8%

All Metrics by Group: Change from previous year

Change in percentage points based on previous year's data

Rates	LACCD	Surrounding Districts	Multi-College Urban	Statewide
Completion	-2%	-1%	-4%	-1%
At Least 30 Units Completion	-1%	1%	0%	0%
Persistence	2%	1%	1%	1%
Remedial Progress: English	-3%	-1%	0%	-1%
Remedial Progress: ESL	-1%	1%	2%	1%
Remedial Progress: Math	-1%	0%	-2%	0%
Career Technical Education Completion	0%	-1%	-3%	0%
Career Development and College Preparation Completion	0%	n/a	n/a	-1%

ALL METRICS BY COLLEGE

All Metrics by College: Current cohort

Rates	District	City	East	Harbor	Mission	Pierce	Southwest	Trade	Valley	West
Completion	39%	34%	38%	39%	35%	48%	31%	30%	42%	38%
At Least 30 Units Completion	63%	62%	66%	63%	58%	72%	51%	56%	63%	61%
Persistence	66%	64%	74%	64%	61%	69%	57%	60%	65%	67%
Remedial Progress: English	36%	37%	42%	40%	31%	51%	22%	19%	40%	32%
Remedial Progress: ESL	21%	14%	28%	20%	8%	29%	14%	9%	25%	22%
Remedial Progress: Math	25%	24%	38%	38%	29%	36%	15%	8%	26%	19%
Career Technical Education Completion	47%	44%	49%	57%	52%	49%	55%	39%	53%	40%
Career Development and College Preparation Completion	n/a	11%	5%	n/a	n/a	n/a	2%	6%	8%	n/a

All Metrics by College: Change from previous year

Change in percentage points based on previous year's data

Rates	District	City	East	Harbor	Mission	Pierce	Southwest	Trade	Valley	West
Completion	-2%	-6%	-4%	-1%	2%	-3%	0%	-3%	-1%	1%
At Least 30 Units Completion	-1%	-2%	0%	1%	-2%	0%	-1%	-2%	1%	3%
Persistence	2%	1%	3%	3%	-1%	0%	6%	-1%	5%	6%
Remedial Progress: English	-3%	-2%	-2%	4%	-7%	0%	-4%	-2%	-2%	-3%
Remedial Progress: ESL	-1%	0%	-3%	-10%	-4%	-1%	11%	1%	-2%	-5%
Remedial Progress: Math	-1%	0%	5%	-1%	0%	-1%	1%	0%	-1%	0%
Career Technical Education Completion	0%	-2%	1%	-1%	7%	-2%	-2%	0%	-4%	3%
Career Development and College Preparation Completion	n/a	2%	-1%	n/a	n/a	n/a	-1%	-2%	1%	n/a